



Presentation on
Gopalpur Industrial Park
“Find Amazing Possibilities”

Odisha at a Glance

One of the fastest growing economies in India

11.5%

- ❑ Consistently growing above the national average
- ❑ Growth Drivers:
 - 41.3 % Industry Sector
 - 36.2 % Service sector
 - 22.5 % Agriculture



2nd in India in attracting Industrial Investment Proposals in FY'23



1st in India in attracting Industrial Investment Proposals in FY'24

Investments worth INR 2,10,837 Crores (55.40% of the total)

Destination East: Gopalpur Industrial Park (GIP)



Developed by Tata Steel Special Economic Zone

Situated at Gopalpur, Ganjam, Odisha

160 Kms from Bhubaneswar (Capital of Odisha)
290 Kms from Vishakhapatnam (Capital of Andhra Pradesh)

Population of 1 million within 10 km radius

Multi-Modal Connectivity

- 0
KM

National Highway - 16

- 4
KM

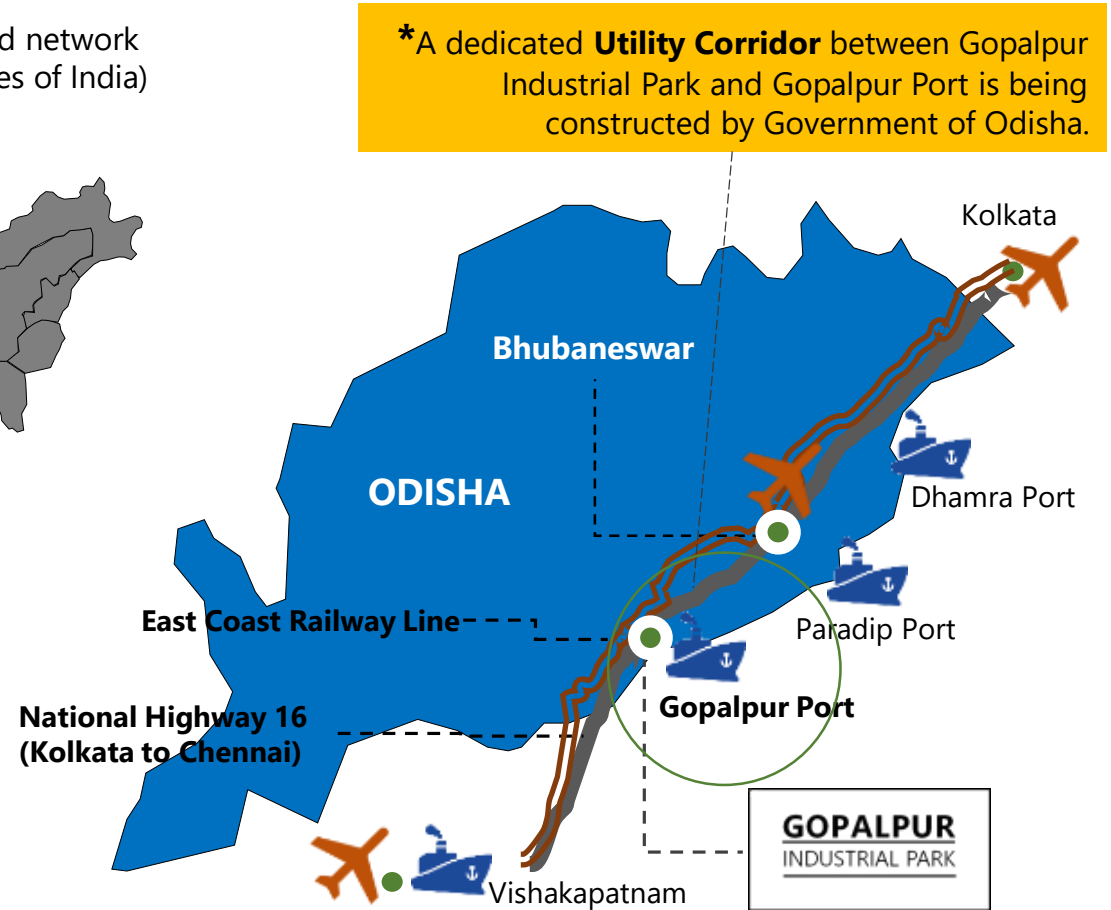
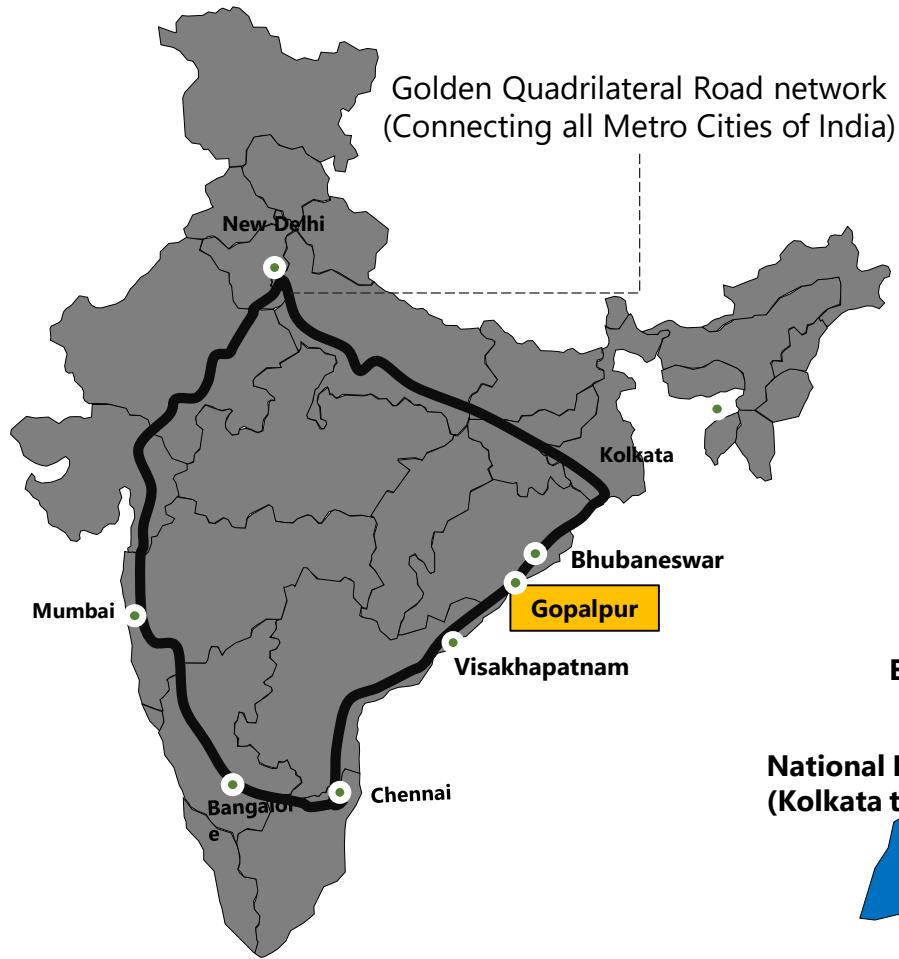
Rangailunda Airstrip

- 2.5
KM

Gopalpur Port*

- 6
KM

Jagannathpur Railway Station



*A dedicated **Utility Corridor** between Gopalpur Industrial Park and Gopalpur Port is being constructed by Government of Odisha.

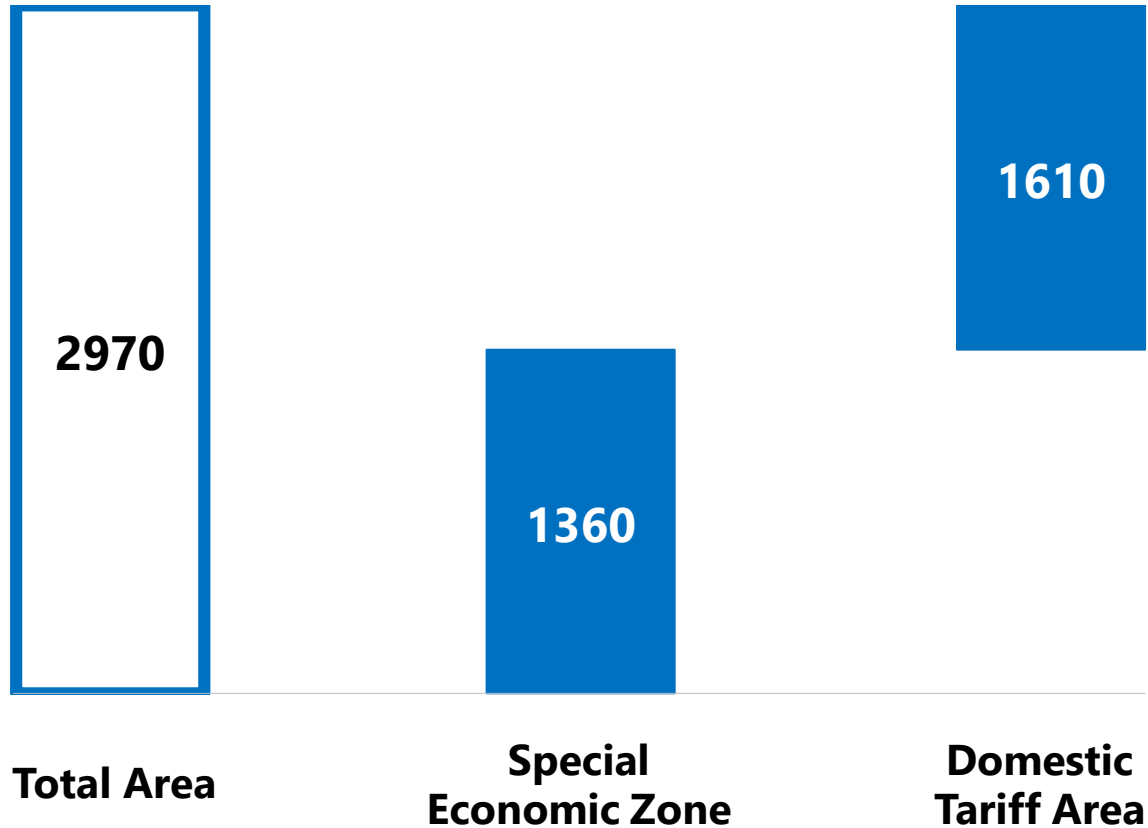
Offerings

"Land, Infrastructure and Other Facilities"



Land Distribution

Land Quantum (In Acres)



Designed by



- Plot Size: Minimum 2 Acres
- Encumbrance-free Land (Surrounded by a RCC boundary wall of 4 meters height and 24 Kms length).
- Land Parcels belonging to SEZ and DTA have been registered in the name of TSSEZL with sub-lease rights.

Infrastructure Services

Power

- Power is sourced at 220 KV level by Tata Steel Special Economic Zone Limited.
- Units may draw power, based on their requirement, from the existing sub-station within the Park.
- A 33 KV overhead line along the National Highway-16 acts as an alternate source of power.
- Govt. is also working for the development of 765/400 KV CTU and 400/220 KV STU near the Industrial Park.

Water

- Abundant Water is available in the nearby Rushikulya River.
- Dedicated water supply from multiple perennial sources.
- Availability of Water from the existing water harvesting reservoirs within the industrial park.

Road

- Direct Connectivity with National Highway - 16.
- Provision of common road access through-out the industrial park.
- A dedicated Utility Corridor between Gopalpur Industrial Park and Gopalpur Port to enhance the logistics for the park.

Our Offerings



TSSEZL's offerings to the investors at Gopalpur Industrial Park:

- 1: Land in Special Economic Zone / Domestic Tariff Area
- 2: Power Supply at 220/33 KV
- 3: Water Connectivity
- 4: Stormwater Drainage
- 5: Connecting Road with Streetlights
- 6: Common Security Services with 24 * 7 video surveillance system

and many other services...

Our Offerings (Continued...)

Warehousing and Logistics



The services include, but not limited to, the following:

- Open and Covered Warehousing
- Material Handling & Stock Management
- Last Mile Distribution and Door Delivery
- Cargo Consolidation and Packaging

Office Space



Tata Steel Special Economic Zone Limited offers ready-to-occupy office space to customers

Value-added Offerings

"Beyond Land & Infrastructure"

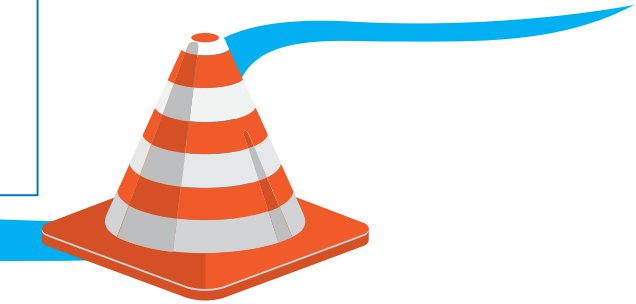


Statutory Clearances

Environment Clearance (EC)

EC has been obtained for Gopalpur Industrial Park (including **red category** industries) which exempts* the individual units from Public Hearing. This leads to a saving of 12 to 14 months (approx.) of time for starting the operations.

*Subject to MOEF Guidelines, 2016



Consent to Establish (CTE)

Blanket CTE has been granted over 1,050 Acres for Gopalpur Industrial Park to facilitate 'Plug-n-Play' model



Facilitation

Dedicated team from the Govt. of Odisha provides end-to-end facilitation in the approval process



Availability of Skilled Resources

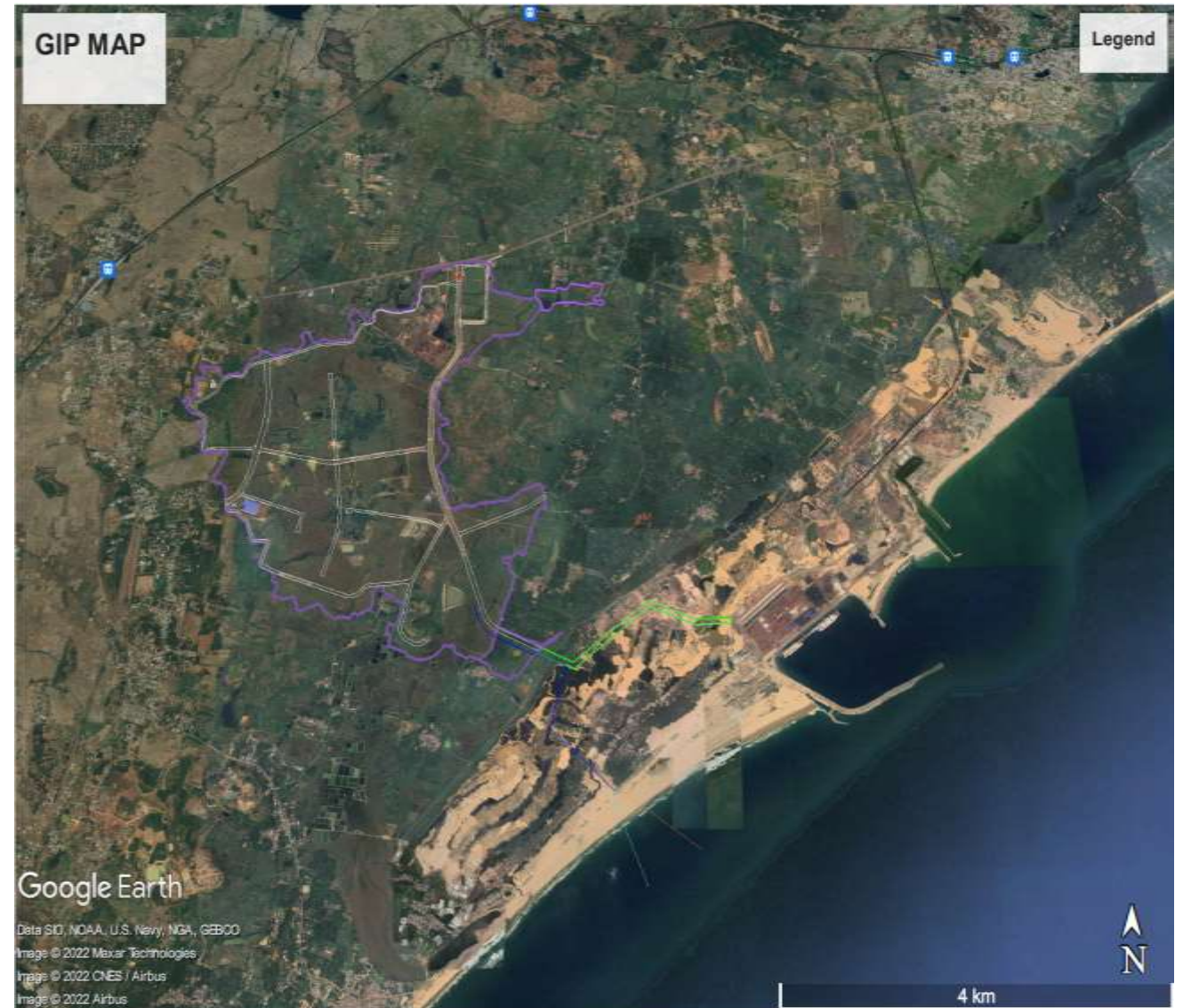
J N Tata Technical Education Centre - Inside Gopalpur Industrial Park



- Nettur Technical Training Foundation (NTTF) runs the training centre inside Gopalpur Industrial Park. The center offers ITI / Diploma courses (3 years long) as well as short term courses for skill development.
- ~200 students are being trained every year by NTTF and obtaining job opportunities through campus placements.
- Industrial Training Institute (ITI), Berhampur – 12th best among the ITIs in the country at 10 Kms from the industrial park.

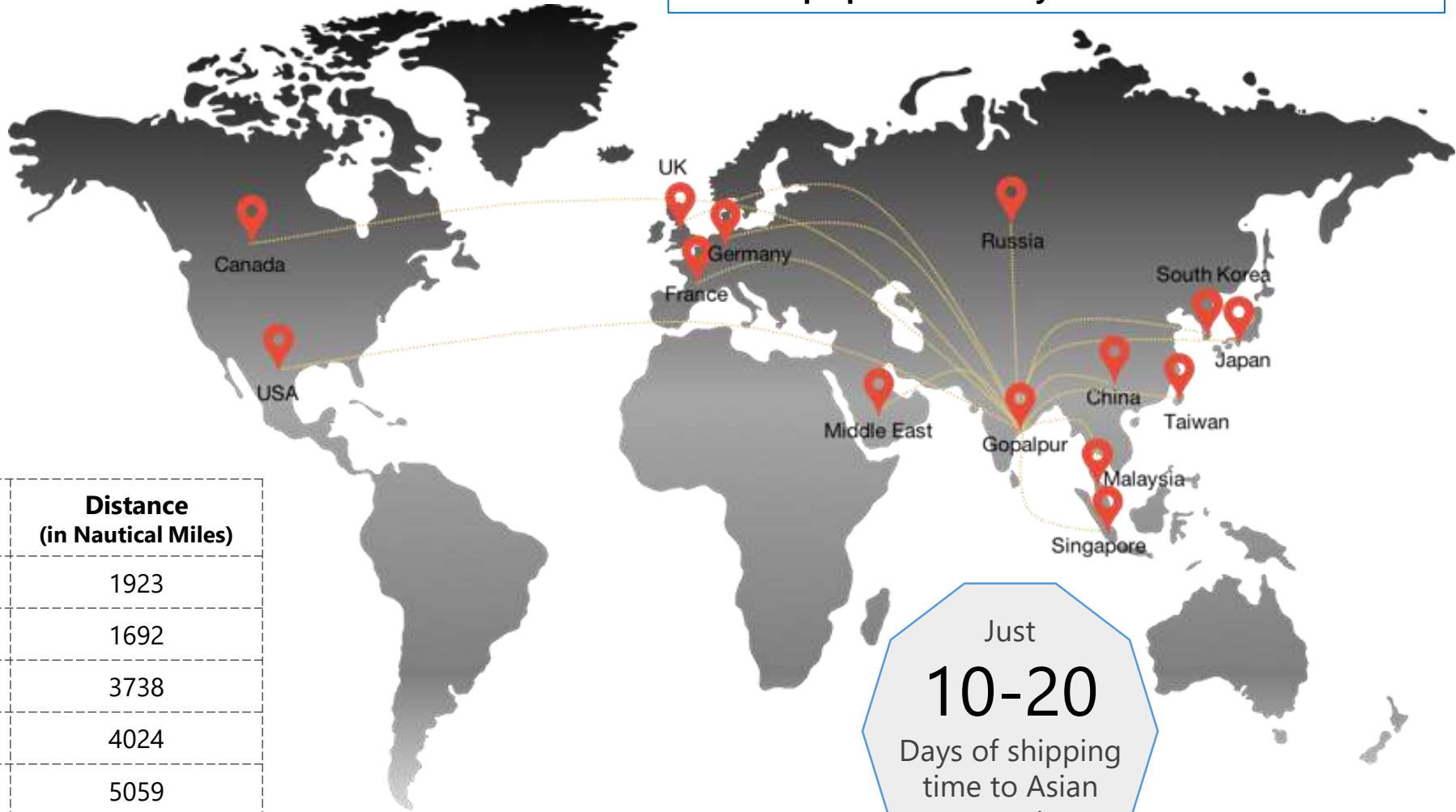
Utility Corridor

- Dedicated corridor for the transport of materials between Gopalpur Port and Gopalpur Industrial Park
- The corridor is being built by Odisha Industrial Infrastructure Development Corporation (IDCO)
- Reduces the distance between Gopalpur Industrial Park and Gopalpur Port from 14 Kms to 2.5 Kms
- Secured 60 m Right-of-Way (RoW) for transport of liquid/gas like:
 - Liquid Ammonia
 - Edible Oil
 - LPG/LNG



Global Connectivity

Gopalpur – Gateway to ASEAN Countries



City	Distance (in Nautical Miles)
Singapore	1923
Port Klang, Malaysia	1692
Shenzhen, China	3738
Kaohsiung, Taiwan	4024
Port of Busan, Korea	5059
Osaka, Japan	5300

Just
10-20
Days of shipping
time to Asian
countries

Availability of Natural Gas

- GAIL Gas Limited has already sub-leased land within Gopalpur Industrial Park for an L-CNG conversion unit.
- GAIL has been authorized by Petroleum and Natural Gas Regulatory Board to lay the 600 km Srikakulam-Angul natural gas pipeline.
- Gas Authority of India Limited (GAIL) has proposed to extend the Natural Gas pipeline via Gopalpur Industrial Park.
- Petronet is setting up an LNG Terminal at Gopalpur Port for supplying natural gas.



Industrial Ecosystem

Within the Industrial Park

Metals

Defense

Food Processing

Mineral Processing

Chemicals

Energy



GOPALPUR
INDUSTRIAL PARK

Around the Industrial Park

Jayashree Chemicals (By Grasim Industries)

Indian Rare Earths Limited
Product: Ilmenite, Zircon, Garnet, Rare Earths

Saraf Titanium Park
Product: Single Product Special Economic Zone

Penna Cement Industries Limited
Product: Cement (Packing Unit)

Micro, Small and Medium Enterprises

- Food Processing (Cashew, Rice)
- Textile (Sarees, Handloom)
- Perfume (From Kewda)

Complete City in the Offering

HOUSING

- Ample residential facilities - Apartments and Housing Societies in Berhampur, Chatrapur & Gopalpur.
- Provision of Housing facilities within the Industrial Park.

HEALTHCARE

- State Government-run MKCG Medical College & Hospital.
- SUM Ultimate Hospital.
- Sankara Eye Hospital.

EDUCATION

- Schools of Repute – DePaul, DAV, St. Xavier, Kendriya Vidyalaya in Berhampur, Chatrapur & Gopalpur.
- Institutes for Higher Education - IISER, Parala Maharaja Engg. College, Berhampur University.

Actual Picture



GOPALPUR INDUSTRIAL PARK

RECREATION

- Gopalpur & Sonapur (Odisha's 2nd Blue Tag Beach) – The 'Beach Towns'.
- Presence of Restaurants & Hotels like Mayfair, Swosti, Pramod, Zone.
- Provision of recreational zone within the Industrial Park including a 9-Hole Golf Course.

Our Family

"A Multi-Product Industrial Park"



Existing Industries

SEZ

Odimet Resources Private Limited

Chromite Fines Processing and
Packaging Unit spread across 2
Acres

(Operational)

SEZ

East Coast Overseas Private Limited

Chromite Fines Processing and
Packaging Unit spread across 2
Acres

(Operational)

DTA

Tata Steel Limited

55,000 Tonnes **FeCr Plant** spread
across 155 Acres

(Operational)

DTA

Tata Consumer Products Limited

36 mn Kgs **Tea Packaging Unit**
spread across 11 Acres

(Operational)

DTA

Anadrone Systems Private Limited

Assembly unit of **Aerial Target
Products** for defense purpose
spread across 2 Acres

(Operational)

DTA

Mahadhan Agritech Limited

Production of **Technical
Ammonium Nitrate** spread
across 40 Acres

(Under Construction)

DTA

GAIL Gas Limited

L-CNG Conversion Unit
spread across 2 Acres

(Under Construction)

New Industries

SEZ

Acme Clean Energy Private Limited

0.5 MnTPA of Green Ammonia
spread across 130 Acres

(MoU Signed)

SEZ

Avaada GreenH2 Private Limited

0.5 MnTPA of Green Ammonia
spread across 120 Acres

(MoU Signed)

SEZ

HHP Five Private Limited

0.4 MnTPA of Green Ammonia
spread across 80 Acres

(MoU Signed)

SEZ

Ocior Energy Gopalpur One Private Limited

0.2 MnTPA of Green Ammonia
spread across 50 Acres

(MoU Signed)

Site at a Glance

Tata Steel Mining Limited



Tata Consumer Products Limited



Anadrone Systems Private Limited



TSSEZL's Project Office



Main Gate Complex



Utility Corridor (Under Construction)



Incentives by Govt. of Odisha

20%

In Priority Sector

with no upper cap

30%

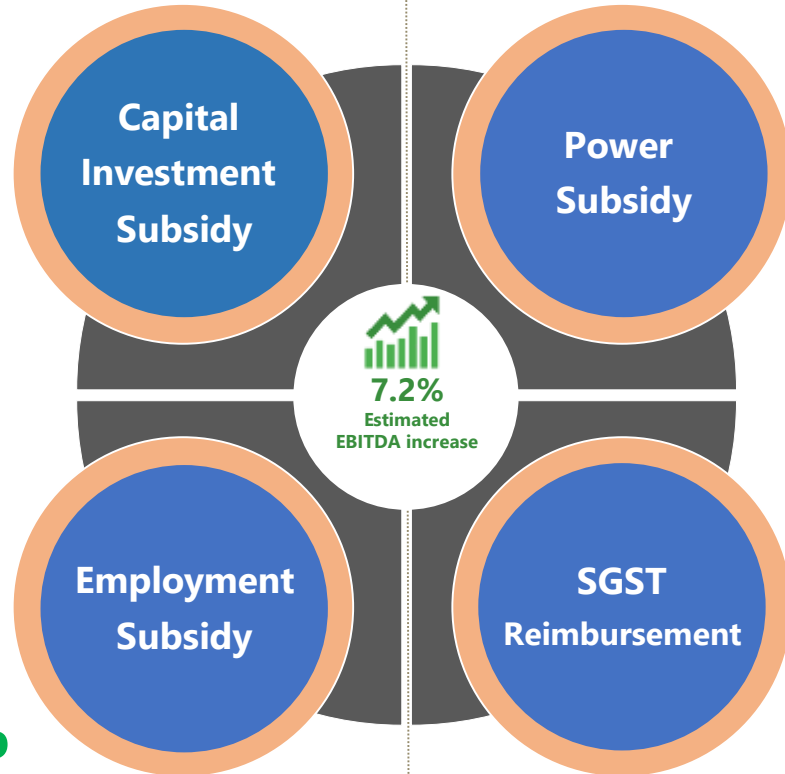
In Thrust Sector

100%

Exemption on Electricity Duty

Rs 3 per Unit

Power Tariff Reimbursement



100%

Reimbursement Of Employee Provident Fund up to 7 Years

100%

Reimbursement Of Net State Goods and Services Tax (SGST) paid

Priority Sectors	Thrust Sectors
<ul style="list-style-type: none"> Ancillary & Downstream in Metal Sector Handicraft, Handloom & Coir based products Agro Processing IT, ITeS & Data Centres Cold Storage & Cold-chain Infrastructure Plastics Food & Sea-Food Processing Rare Earth Minerals based value added products Specialty Steel & its Products Gemstone – Cutting & Polishing; Granite – Cutting & Polishing, Tourism & Hospitality Shipbuilding, Ship-repair & Construction of other mechanized floating vessels 	<ul style="list-style-type: none"> Aerospace & Defense Automobiles & Auto Components Chemicals & Petrochemicals Biotechnology, Pharmaceuticals Bulk Drug & Medical Equipment Green Energy Equipment Electronics System Design & Manufacturing (ESDM) Green Hydrogen & Green Ammonia Manufacturing in Aviation & Maintenance, Repair & Overhaul (MRO) facilities Mechanical & Electrical Capital Goods Telecommunications Equipment White Goods & Components Textiles, Technical Textiles, Apparel, Wearables & Luggage

Please reach out to Mr. Sanat Sarangi (+91 - 8917221391) or Ms. Nupur Rathore (+91 - 8936011889) for any clarification.

Thank You

Follow Us On



For more details, please visit: www.gip.city