

# Transforming India into a Global Manufacturing Hub

NextGen Chemicals & Petrochemicals Summit

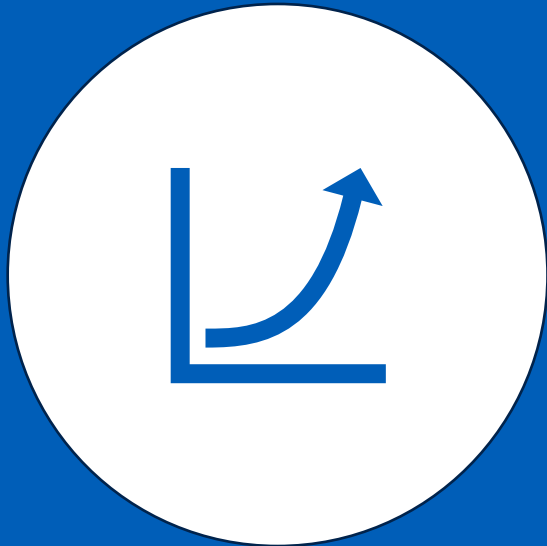
Bhavana Bindra

MD, IMEA

The Lubrizol Corporation



# India is a growth story for next decades



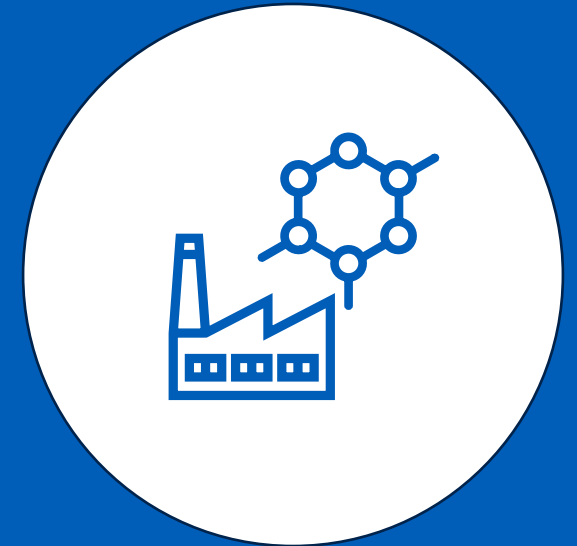
**Economy**



**Output**



**Human Capital**



**Manufacturing**

# Government Actions & Policies Aiding Growth in India

Petroleum,  
Chemicals and  
Petrochemical  
Investment Regions  
(PCPIR) Policy

Production-Linked  
Incentive (PLI)  
Scheme

Chemicals  
Promotion and  
Development  
Scheme (CPDS)

Import-Export  
Governance

Public Procurement  
Policy (PPP)

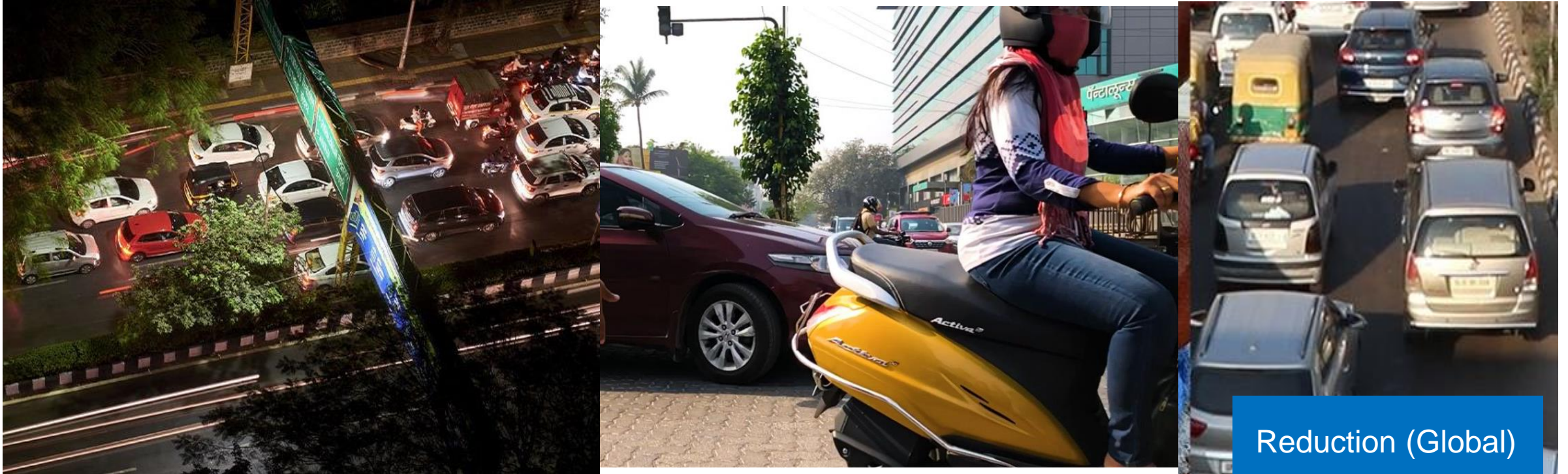
2034 Vision For  
Chemicals Sector

# Solutions to Meet the Needs of a Changing World



# Technology to Enable Vehicle Engine Efficiency

## Advance Mobility



Lubrizol's additives for engine oil and fuels have enabled:

- 2X CO<sub>2</sub> reduction, from 600 g/mi to 335 g/mi )
- 100X increase in engine life, from 3,000 miles to 300,000 miles
- Grease lab in India enables 35 new blends for transportation and industrial application enabling Local for local

Reduction (Global)

**>12MM  
MT CO<sub>2</sub>**

# Energy-Efficient Home Care

## Improve Wellbeing



1.1 Mn  
Gallons

- Reduce deforestation by replacing palm oil derivatives in laundry bars used for cleaning
- improved the structural integrity of bars used for Cleaning to ensure they last longer and reduce waste.

# Delivering Clean Water With Reduced Impact

## Enhance Modern Life

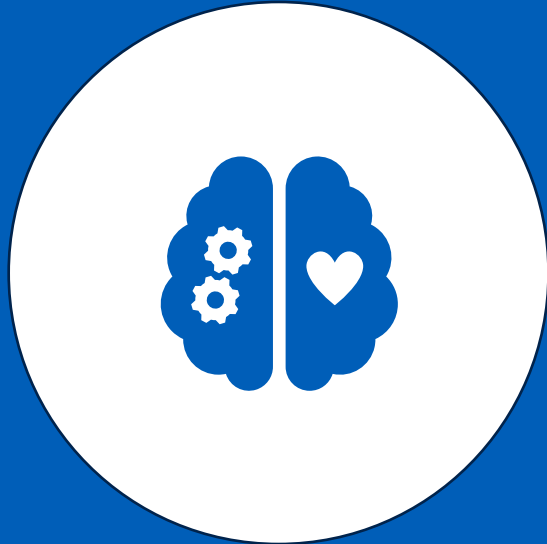


- Lubrizol CPVC delivers clean water to millions with a reduced environmental impact in manufacturing with 44% lower than the LCA of competing materials
- Local for Local Initiative enabling the main raw material for our CPVC production locally available from our partner Grasim, via a pipeline delivery network.

Lifecycle Assessment

**44%**  
**lower**

# Together we can



**Strategic Thinking**



**Execution**



**Collaboration**



*Lubrizol*

The logo features the word "Lubrizol" in a white, italicized, sans-serif font. Below the text is a white, curved underline that starts under the 'L', dips down, and then rises to end under the 'l'.